



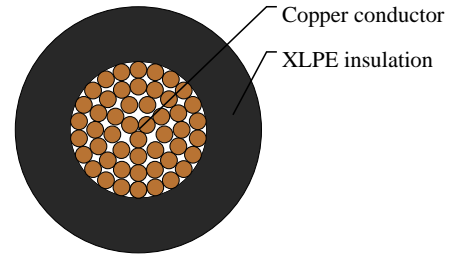
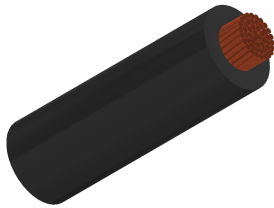
Caledonian

Automotive Cables

www.caledonian-cables.com

marketing@caledonian-cables.com

AEXF 1C1.25



APPLICATIONS

This XLPE insulated single-core cable is used in low voltage circuits in automobiles(vehicles and motorcycles)

STANDARDS

JASO D611

CABLE CONSTRUCTION

Conductor: Annealed stranded copper

Insulation: Cross-linked Polyethylene (XLPE) or Polyvinyl Chloride

Standard Compliance: JASO D611

PHYSICAL AND THERMAL PROPERTIES

Operating temperature: -40 °C to +120 °C

DIMENSION AND PARAMETERS

No. of Cores × Cross-sectional Area	No. and Dia. of Wires	Diameter of Conductor (max.)	Nominal Insulation Thickness	Overall Diameter (min.)	Overall Diameter (max.)	Approx. Weight	Electrical Resistance at 20°C (max.)
No. × mm ²	no./mm	mm	mm	mm	mm	kg/km	MΩ/m
1x1.25	50/0.18	1.5	0.6	2.7	2.8	17.5	14.6